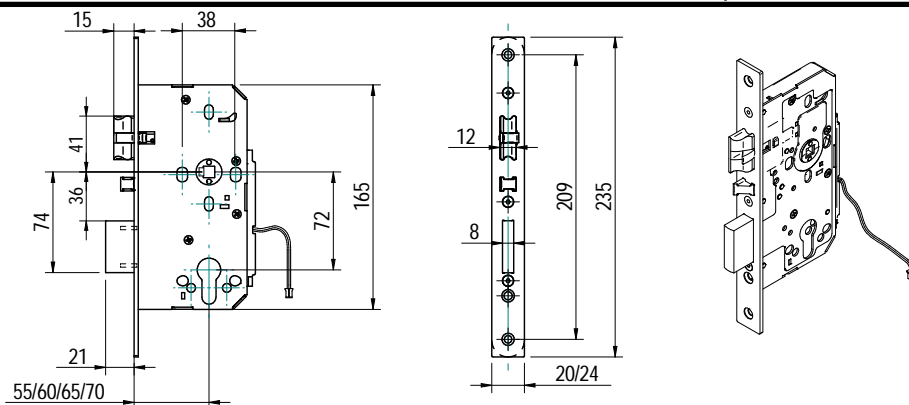


Installation guide

SALTO LE7Sxx.. symmetric mortise lock

SALTO
inspiredaccess

Eng Installation guide

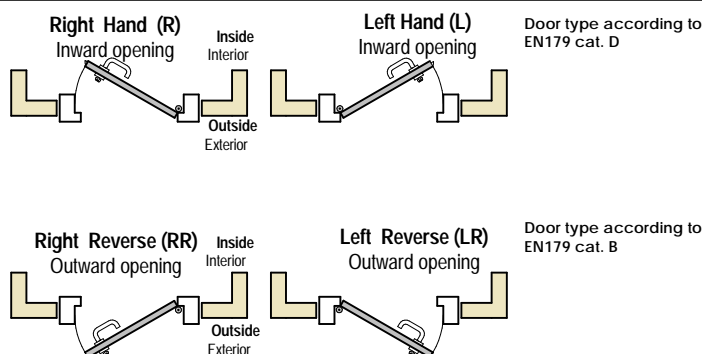


Symmetric

Manufactured according to DIN 185251

Eng SALTO handing code

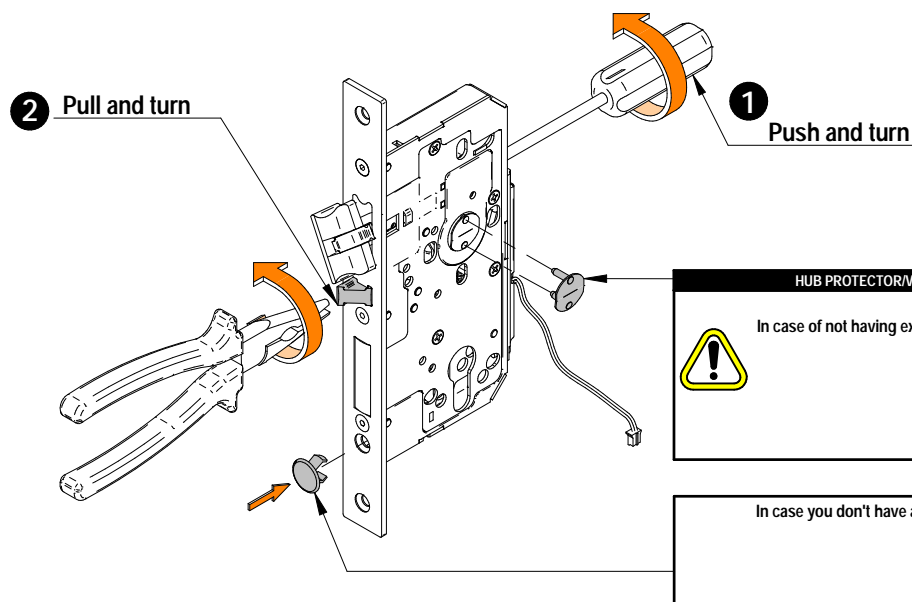
The LE7Sxx mortise lock is supplied as right hand (R), if your installation is left hand (L), as shown in the image, proceed to make the hand changing as indicated:



Eng Hand changing

Please follow the drawing:

1. Push the latch forward from the back of the lock with a screw driver until it completely comes out from the front then turn 180°.
2. Pull the auxiliary latch forward and turn it 180°.



LE7S05	Mechanical lock for scape routes and/or fire doors	CERTIFIRE CF 5596
ES 5454/2020	1 A 1 B 0 0 0 0	
EN 12209:2003 + AC:2005	3 M 8 1 0 F - B 0 1 0	
EN 179:2008	3 7 6 B 1 3 4 2 A B/D	
CE 2812	2812-CPR-AG5163 2812-CPR-ABB5019	17 1121-CPR-UK-AG7760 1121-CPR-UK-ABB7759
SALTO SYSTEMS, S.L. Pol. Indust. Lanbarren, c/Arkotz, 9 20180, Oiarzun-Gipuzkoa, Spain		UK Importer: SALTO SYSTEMS, Ltd. Unit 1, The Court Holywell Business Park, Northfield Road, CV47 0FS Southam, UK

LE7S15	Mechanical lock for scape routes and/or fire doors	CERTIFIRE CF 5596
ES 5454/2020	1 A 1 B 0 0 1 0	
EN 12209:2003 + AC:2005	3 M 8 1 0 F 2 B A 1 0	
EN 179:2008	3 7 6 B 1 3 4 2 A B/D	
CE 2812	2812-CPR-AG5163 2812-CPR-ABB5019	17 1121-CPR-UK-AG7760 1121-CPR-UK-ABB7759
SALTO SYSTEMS, S.L. Pol. Indust. Lanbarren, c/Arkotz, 9 20180, Oiarzun-Gipuzkoa, Spain		UK Importer: SALTO SYSTEMS, Ltd. Unit 1, The Court Holywell Business Park, Northfield Road, CV47 0FS Southam, UK

LE7S25	Mechanical lock for fire doors	CERTIFIRE CF 5596
ES 5454/2020	1 A 1 B 0 0 1 0	
EN 12209:2003 + AC:2005	3 M 8 1 0 F 2 B A 1 0	
CE 2812	2812-CPR-AG5163 2812-CPR-ABB5019	17 1121-CPR-UK-AG7760 1121-CPR-UK-ABB7759
SALTO SYSTEMS, S.L. Pol. Indust. Lanbarren, c/Arkotz, 9 20180, Oiarzun-Gipuzkoa, Spain		UK Importer: SALTO SYSTEMS, Ltd. Unit 1, The Court Holywell Business Park, Northfield Road, CV47 0FS Southam, UK

HUB PROTECTOR/VERKANTABDECKUNG/ PROTECTOR NUECA/ PROTECTOR FOUILLOT

ONLY NON DETECTOR MODELS.

In case of not having external lever, insert the hub protector in the outside part of the door.



In case you don't have a cylinder retaining screw, install the cylinder retaining screw cover.

Installation guide

SALTO LE7Sxx.. symmetric mortise lock

SALTO
inspiredaccess

Eng Lock installation

Eng PREPARING THE DOOR

NOTE: if the strike already exists in the door frame, position latch using the strike as reference. (See strike position on template)

1. Draw a horizontal line on both sides and edge of the door at the desired height of handle above floor.
2. Draw a vertical centre line on door edge.
3. Draw a vertical line on each side of the door at the proper backset to align the template.
4. Position templates on edge and sides of door. Mark only top and bottom holes of mortise cavity (A) and lock front (B) on door edge, and holes in the lateral face of the door for handles (C) and cylinder (D) (only needed in inside face).
5. Remove the template. Make door preparation of the lockcase according to (A).
6. Insert the lockcase. Draw the outline using the face plate as a template for door preparation.

NOTE: Holes for fixation of SALTO electronic escutcheon are not included in this template. Please use the template in the escutcheon box.

INSTALLING THE LOCK

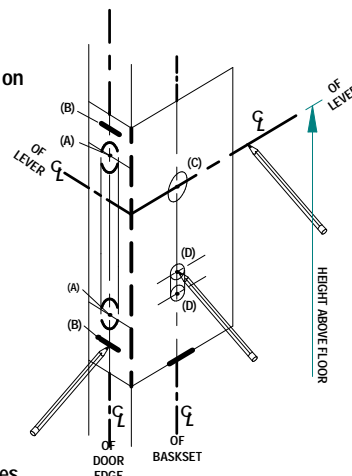
1. Insert the lock into the cavity.
2. Mark & drill faceplate holes. Fasten with faceplate screws to hold lock in place.

INSTALLING THE STRIKE

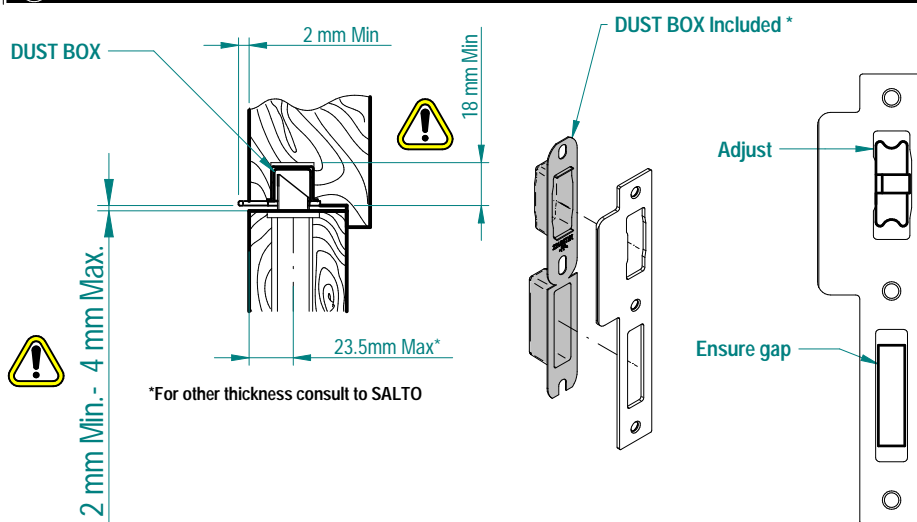
1. Refer to latch to determine strike location on jamb.
2. Using strike as template, mark and chisel recess.
3. Drill screw holes. Place dust box and strike and fasten with the supplied screws.
4. Please check if:
 - Deadbolt and latch fit the cavities of the strike without touching it.
 - Gap between door and jamb is between 2-4 mm.
 - Strike flap should protrude at least 2mm, if it does not, please ask your distributor for the availability of special strikes.

CABLE CONNECTION

For models with detectors, connect according to the corresponding electronic escutcheon installation guide.



Eng Strike installation



**** For the auxiliary latch to operate correctly, it is absolutely essential to install the dust box.**

Eng Maintenance

Eng All locks come from the factory pre-lubricated with grease. We recommend, however, continued periodic lubrication of moving parts like, latch, auxiliary latch and deadbolt, with commercial quality grease (every 20.000 cycles or once a year). This can prolong the life of the lockset by reducing excessive wear. If the lockset is used in a harsh environment, lubrication should be applied more frequently.

* EN 179

- The safety features of this product are essential to its compliance with EN 179. No modification of any kind, other than those described in these instructions, is permitted.
- This device is intended for use on single inward/outward opening fire and non-fire rated escape route doors.
- This product is to be used on doors with maximum dimensions of 1300mm wide x 2500mm height and weighing no more than 200kg (440lb).
- Maximum door distortion of 5mm allowed to ensure safe exit at all times.
- Maximum of 1000N abuse force achieved under the abuse test.
- Category of Projection = Category 1 Less than 150mm ("I" handle).
- For use on timber doors.
- Suitable for use on fire doors.
- Fire resistance 30 mins, 60 mins and 90 mins timber doors.
- For fire certificates, see www.saltosystems.com
- This product meets EN 179 only when combined with an XS4 Original, XS4 Original+, XS4 One or XS4 One+ electronic escutcheon fitted with U, H or J handles, or XS4 Mini electronic escutcheon fitted with U, E, I or J handles.
- Blocking the electronic lever handle from the outside can render the device inoperable from the inside.