

Mortise Lock: SALTO LE8Pxx...

CE-EN 12209.2004 / CE-EN 179.2003* / EN 1634 Eh60 Fire resist

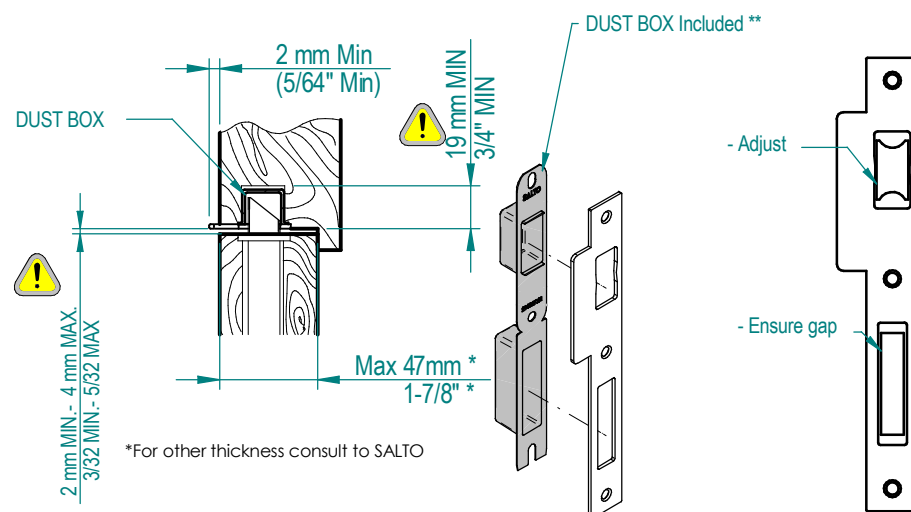
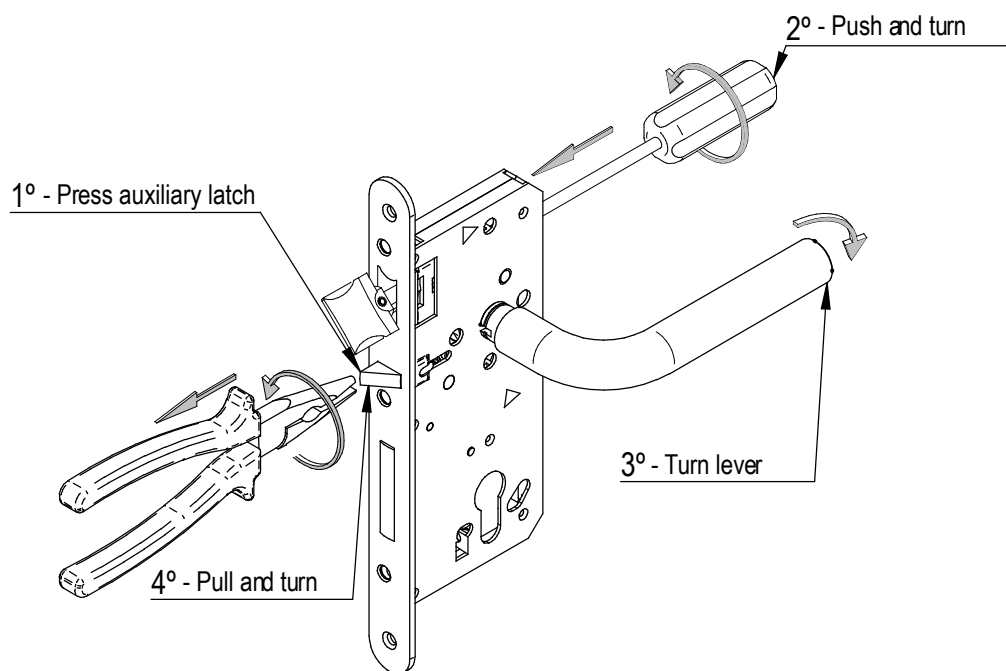
SALTO
inspiredaccess

INSTALACION CE8Pxx STRIKE

Eng HAND CHANGING

Please follow the drawing:

1. Press the auxiliary latch to project latch bolt.
2. Push the latch forward from the back of the lock with a screw driver until it completely comes out from the front then turn 180°.
3. Turn the lever to deactivate auxiliary latch.
4. Pull the auxiliary latch forward and turn it 180°.



** For the auxiliary latch to operate correctly, it is absolutely essential to install the dust box.

LUBRICATION

All locks come from the factory pre-lubricated with grease. We recommend, however, continued periodic lubrication of internal moving parts with commercial quality grease (every 20.000 cycles or once a year). This can prolong the life of the lockset by reducing excessive wear. If the lockset is used in a harsh environment, lubrication should be applied more frequently.

*EN 179: The security characteristics of this product are essential to meet the EN 179 standard. Modifications other than those described in these instructions are not permitted. It is for use on doors with maximum dimensions of 1300x2500mm (4.26x8.2') and a weight of no more than 200kg (440lb). It only meets EN 179 when U or H handles are used.